

SAFETY Function with MPC

**IMD / IMDL drives
runned by MPC controller**

**USE
PRECAUTIONS**

Serad reserves the right to modify all or part of the specification of the equipment without prior warning.

Whereas all measures have been taken to ensure the accuracy of the information provided, Serad assumes no responsibility for any errors that may appear in this document.

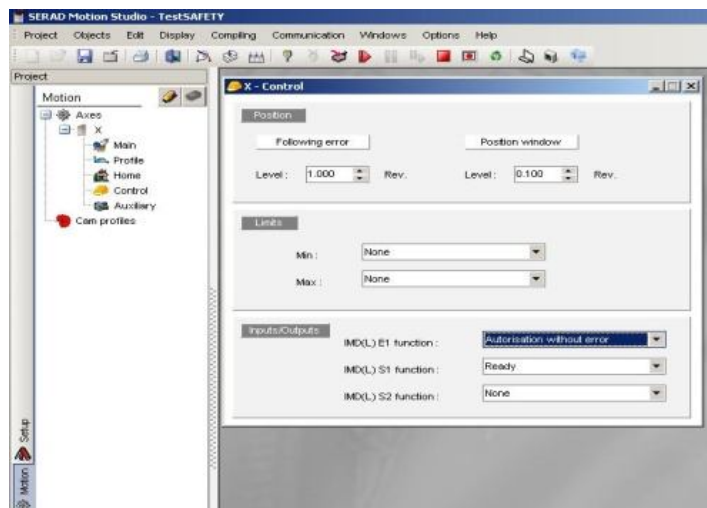
Required setup

The IMD & IMDL drives Operating System version must be the 3.28 or greater.

You can visualize this version number with the Motion Studio software, menu « help », heading « About », button « Info », « IMD : Version x.xx ».

It is obligatory to declare the input E1 function « Autorization without error » on each drive which have Safety.

This declaration can be done with the Motion Studio software, window « Motion », heading « Control » of each axis.



The input E1 must be configured in positive logical (no invert).

This declaration is done in the window « PLC », « Editor », « axis name », « Inputs », « BOOL inputs », « BOOL Input 0.0 (1) Invert :NO ».

Connecting

Enable sequence

It is better to activate the Safety input and then the E1 input.

However it is possible to activate the two inputs in the same time.

Disable sequence

It is better to deactivate the E1 input and then the Safety input.

However it is possible to deactivate the two inputs in the same time.

Be careful

If the required setup and the connecting are not respected, the drives could be damaged.

