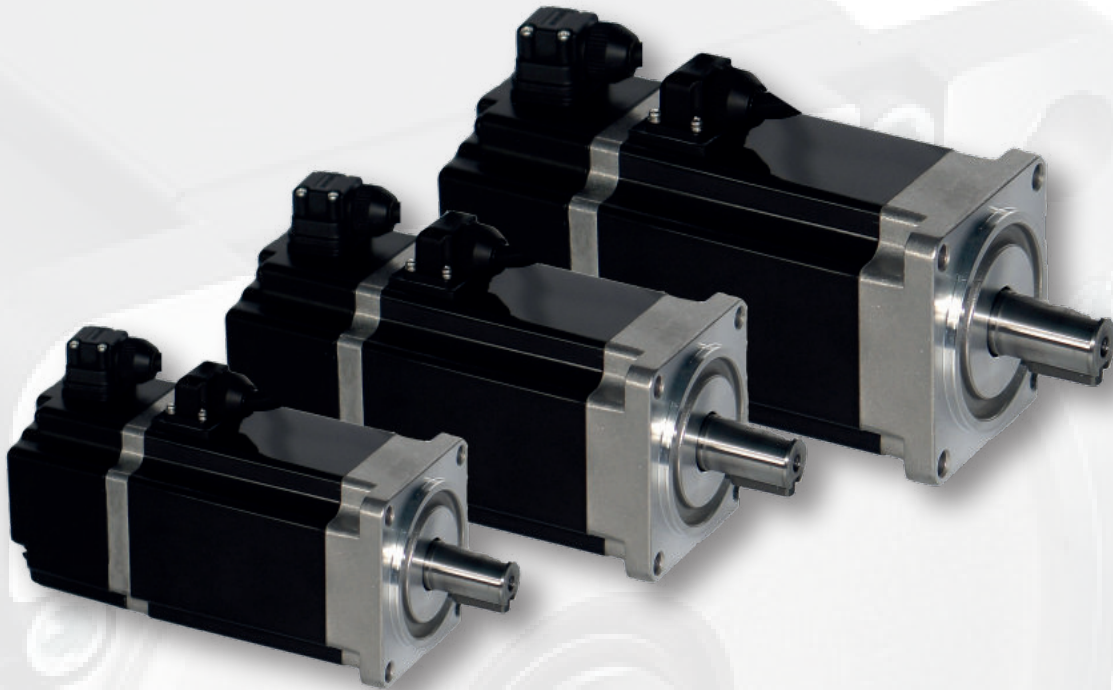


Brushless Servo motors

400V SF series



APPLICATIONS

- Machining
- Robotic
- Handling
- Packaging
- Labeling
- Graphic arts

OPTIONS

- Absolute encoder
- Resolver
- Parking brake

PRODUCT RANGE

- Power supply 400 V
- 4 sizes available
- From 0,6 to 10 Nm
- Speed 3000 rpm
- High dynamic
- Sinusoïdale commutation
- Encoder feedback
- Plug-in connectors
- IP65 Protection

400V SF Series

Type	Rated torque Mn (Nm)	Rated power Pn (kW)	Rated speed n (tr/min)	Rated current In (A) 400V	Inertia J (kg.cm ²)	Pole number	Length without brake (mm)	Length with brake (mm)	Weight without brake (kg)	Weight with brake (kg)
SF60A230	0,64	0,2	3000	0,75	0,264	8	115	156	1,15	1,55
SF60A330	1,27	0,4	3000	1,1	0,407	8	143	184	1,72	2,12
SF60A430	1,91	0,6	3000	2,2	0,526	8	159	200	2,03	2,43
SF80A530	2,39	0,75	3000	1,8	0,924	8	145	188	2,92	3,62
SF80A630	3,18	1	3000	2,8	1,207	8	163	206	3,49	4,17
SF110A1230	4	1,2	3000	2,9	7,62	8	155	204	6	7,7
SF110A1530	5	1,5	3000	3,6	9,45	8	170	219	6,9	8,6
SF110A1830	6	1,8	3000	4,6	11,33	8	188	237	8,2	9,9
SF130A2425	10	2,4	2500	7,5	26,4	8	207	254	11,9	13,9

Flange & loads

Type	Square flange (mm)	Bolt circle \varnothing / 4 holes \varnothing (mm)	Centering \varnothing (mm)	Shaft \varnothing x L (mm)	Radial load (N)	Axial load (N)
SF60	60	70 / 5,5	50	14 x 30	245	98
SF80	80	90 / 6,5	70	19 x 35 *	392	147
SF110	110	130 / 9	95	19 x 55	539	171
SF130	130	145 / 9	110	22 x 55	686	196

* shaft 19x40 if feedback C8 (Biss C)

Codification

Model	Size	Voltage	Power	Speed	Feedback	Brake
SF	60	A*	2 200W	30 3000 rpm	C2 incremental+hall 2500 pts	0 Without
	80		3 400W	25 2500 rpm	C4 serial 23 bits	Z With
	110		4 600W		C8 Biss C 17+16 bits (only on SF60 and SF80)	
	130		5 750W		C9 resolver	
			6 1000W			
			12 1200W			
			15 1500W			
			18 1800W			
			24 2400W			

* 400V voltage is indicated on the nameplate