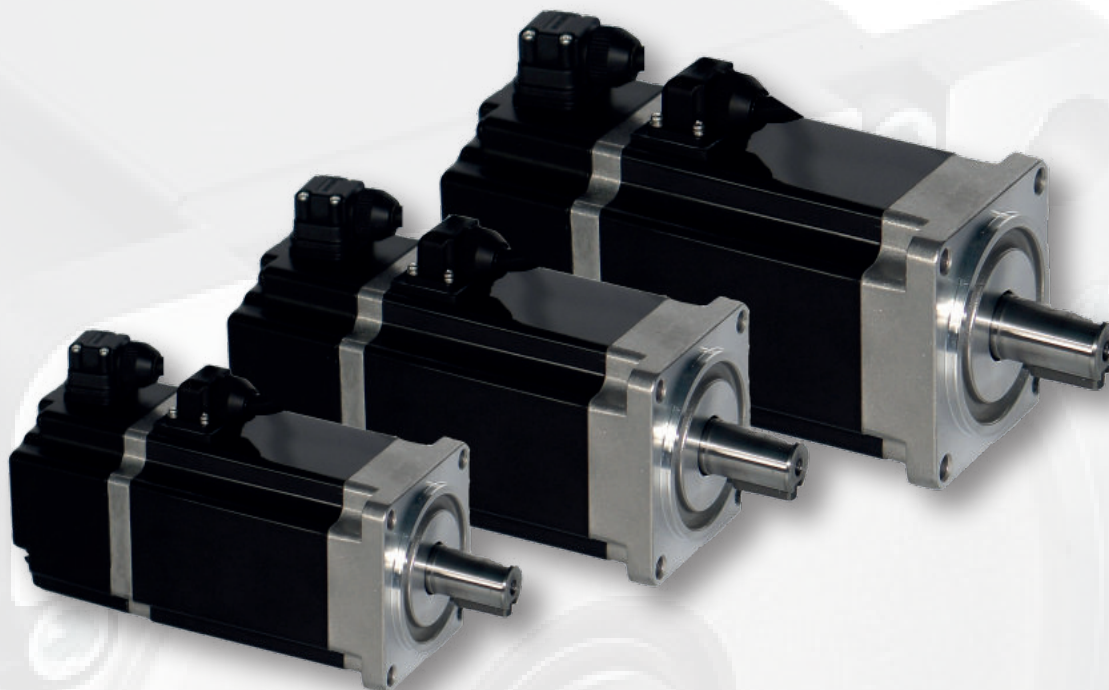


Brushless Servo motors

SF series



APPLICATIONS

- Machining
- Robotic
- Handling
- Packaging
- Labeling
- Graphic arts

OPTIONS

- Absolute encoder
- Resolver
- Parking brake

PRODUCT RANGE

- Power supply 48..230 V
- 3 sizes availables
- From 0,3 to 3,2 Nm
- Speed 3000 rpm
- High dynamic
- Sinusoïdale commutation
- Encoder feedback
- Cable output
- IP65 Protection

230V SF Series

Type	Rated torque Mn (Nm)	Rated power Pn (kW)	Rated speed n (tr/min)	Rated current In (A) 230V	Inertia J (kg.cm ²)	Pole number	Length without brake (mm)	Length with brake (mm)	Weight without brake (kg)	Weight with brake (kg)
SF40A130	0,32	0,1	3000	0,8	0,035	8	99	136	0,56	0,73
SF60A230	0,64	0,2	3000	1,1	0,264	8	115	156	1,15	1,55
SF60A330	1,27	0,4	3000	2,3	0,407	8	143	184	1,72	2,12
SF60A430	1,91	0,6	3000	3,8	0,526	8	159	200	2,03	2,43
SF80A530	2,39	0,75	3000	4,2	0,924	8	145	188	2,92	3,62
SF80A630	3,18	1	3000	4,5	1,207	8	163	206	3,49	4,17

48V SF Series

Type	Rated torque Mn (Nm)	Rated power Pn (kW)	Rated speed n (tr/min)	Rated current In (A) 48V	Inertia J (kg.cm ²)	Pole number	Length without brake (mm)	Length with brake (mm)	Weight without brake (kg)	Weight with brake (kg)
SF40B130	0,32	0,1	3000	3,5	0,035	8	99	136	0,56	0,73
SF60B230	0,64	0,2	3000	6,5	0,264	8	115	156	1,15	1,55
SF60B330	1,27	0,4	3000	12,8	0,407	8	143	184	1,72	2,12
SF80B530	2,39	0,75	3000	20	0,924	8	145	188	2,92	3,62

Flange & loads

Type	Square flange (mm)	Bolt circle ϕ / 4 holes ϕ (mm)	Centering ϕ (mm)	Shaft ϕ x L (mm)	Radial load (N)	Axial load (N)
SF40	40	46 / 4,4	30	8 x 25	78	54
SF60	60	70 / 5,5	50	14 x 30	245	98
SF80	80	90 / 6,5	70	19 x 35 *	392	147

* shaft 19 x 40 if feedback C8 (Biss C)

Codification

Model	Size	Voltage	Power	Speed	Feedback	Brake
SF	40	A *	1 100W	30 3000 rpm	C2 incremental+hall 2500 pts	0 Without
	60	B 48V	2 200W		C4 serial 23 bits	Z With
	80		3 400W		C8 Biss C 17+16 bits (only on SF60 and SF80)	
			4 600W		C9 resolver	
			5 750W			
			6 1000W			

* 230V voltage is indicated on the nameplate